An aerial photograph of a large concrete dam and reservoir situated in a deep desert canyon. The canyon walls are composed of layered, reddish-brown rock. The reservoir is a deep blue color, and the dam is a long, curved structure across the middle of the frame. The sky is a clear, pale blue.

# **SRP's Integrated System Plan Overview**

**Arizona ASFMRA's 29th Annual Spring Ag. Forum**

**March 7, 2025**

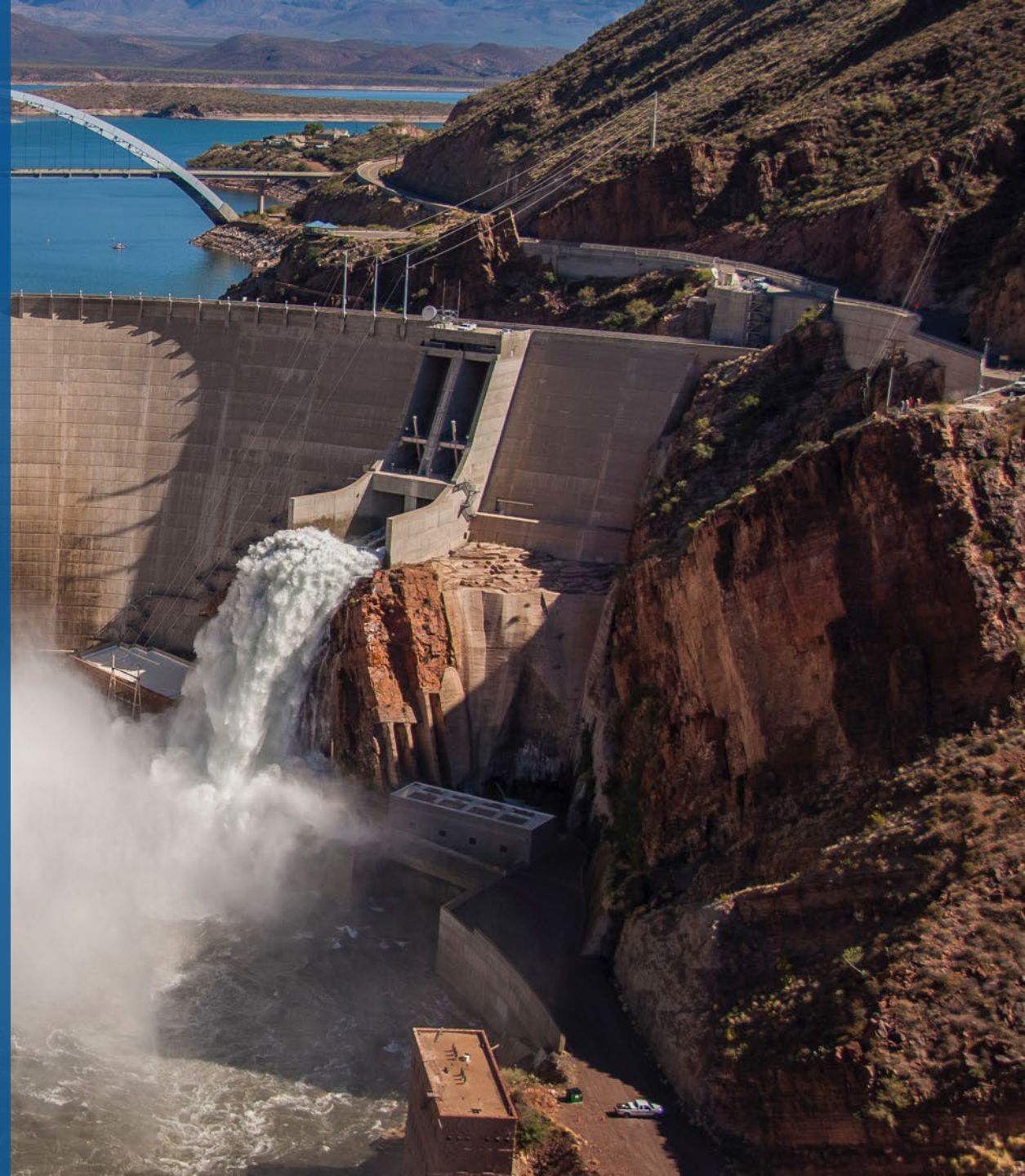


# What is SRP?

- One of the nation's largest public power utilities
- Provide sustainable, affordable, reliable water and power to more than **2 Million** people

## Mission Statement

SRP serves our customers and communities by providing reliable, affordable and sustainable water and energy.

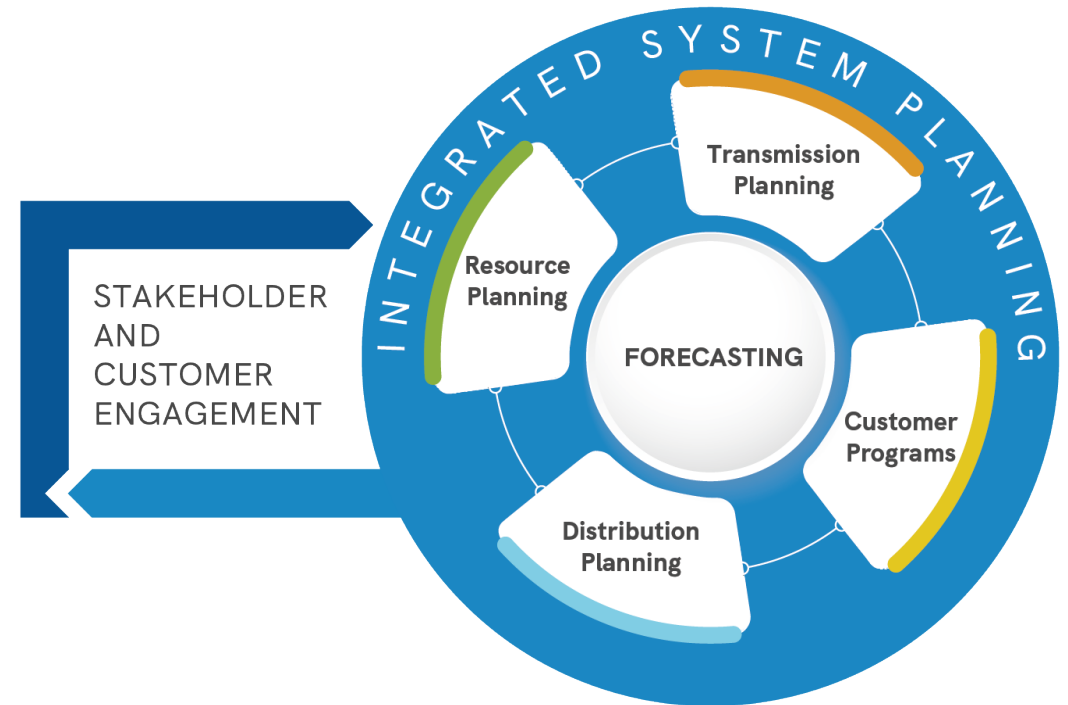




# How we plan the power system

## Integrated System Planning

- Viable pathways for achieving SRP's goals
- Costs, risks and tradeoffs of different strategic approaches
- Identifies system solutions that are viable across different future scenarios
- Informed by, and visible to stakeholders and customers



# Planning for uncertainty

What if climate change makes the **desert** a **less favorable** place to live?

## DESERT CONTRACTION



What happens if SRP experiences **strong load growth**, and **renewable costs** continue to **decline**?

FY35 Demand: 10,988MW

## CURRENT TRENDS



What if the U.S. passes increasingly **aggressive climate policy**?  
What if renewables are cheaper and emerging tech available sooner?

## STRONG CLIMATE POLICY



What if Arizona becomes an employment and data hub resulting in **explosive load growth**?

FY35 Demand: 12,519MW

## DESERT BOOM



# Key findings for the future power system

- SRP will need to **double** if not **triple** resource capacity in the **next decade** to serve customers while achieving reliability and sustainability goals. This is an unprecedented pace.
- New renewables **combined with** firm generation capacity are part of a least-cost portfolio, even under a wide range of gas price and technology cost sensitivities.
- Without **new firm generation capacity**, the system cannot satisfy reliability requirements under a high load growth scenario.
- **Hundreds of miles** of new or upgraded transmission lines and nearly double the number of 500/230 kV transformers could be needed relative to today. Location matters.
- SRP will need to **evolve programs and price plans** to shift consumer behavior and to further educate customers on when to consume and when to conserve energy.

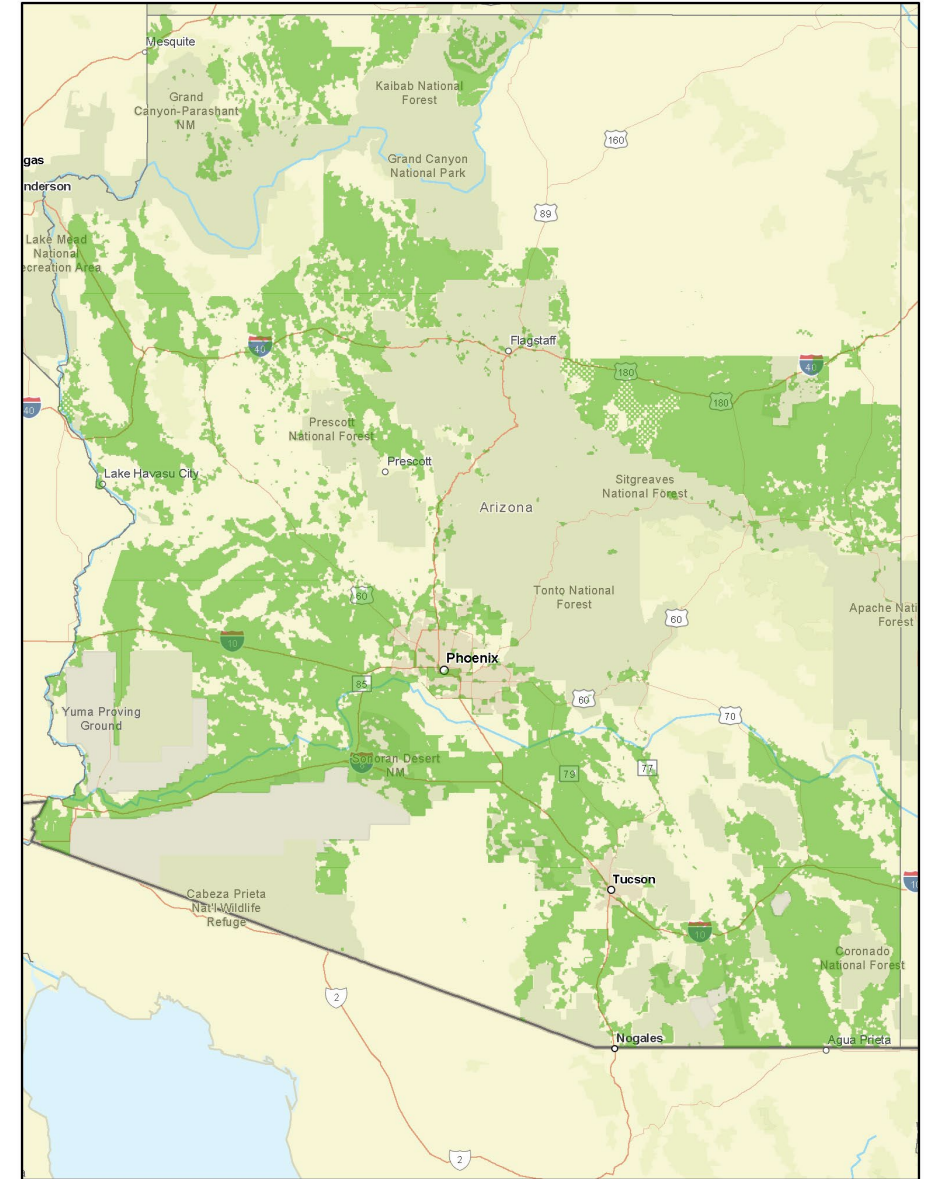
# How do we get there?

## Customer Grid Focused Actions

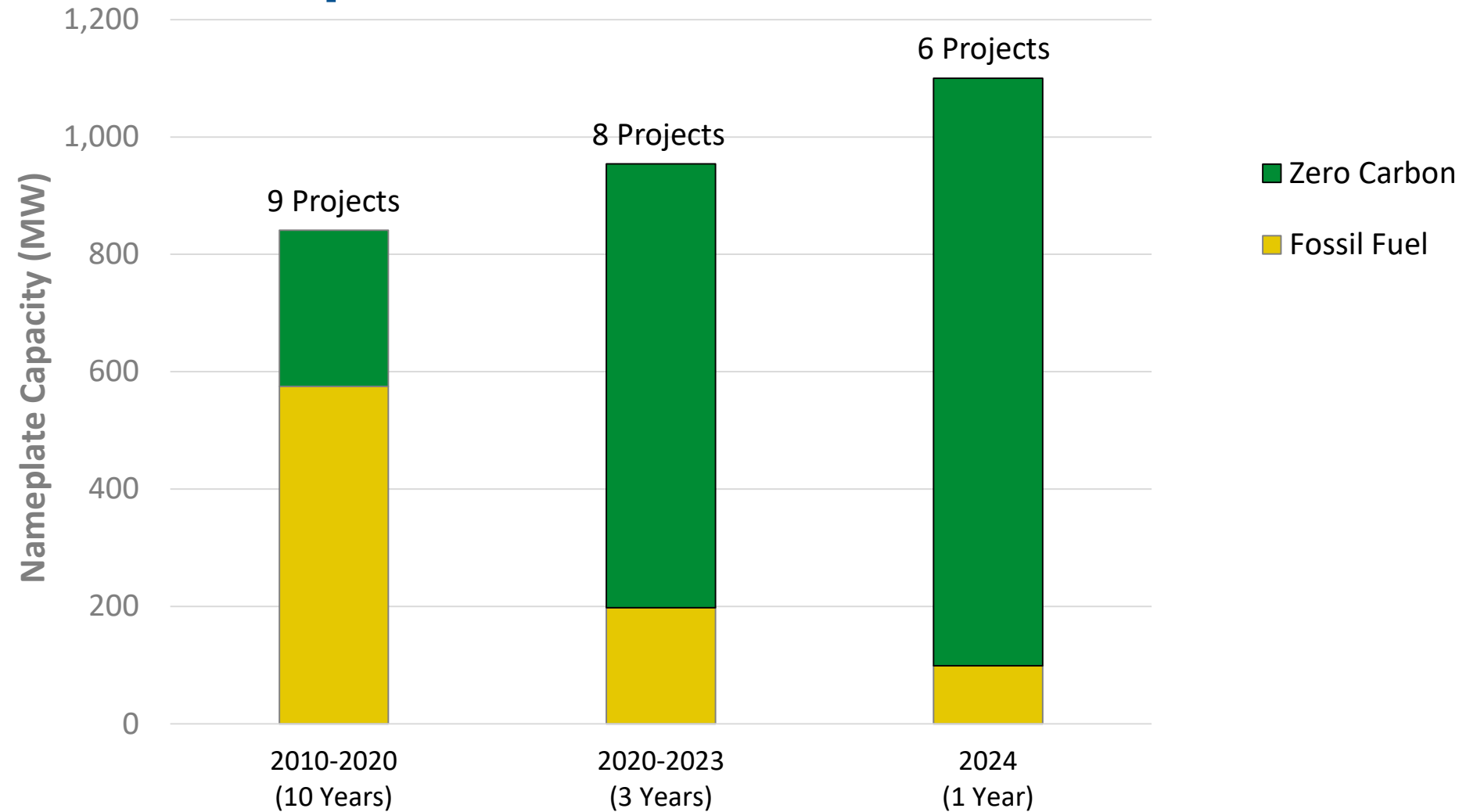
- Residential Time-of-Use Pilot
- Time-of-Use Evolution
- Customer Program Refresh
- EV Managed Charging Roadmap
- Electrification
- Distribution Enablement Roadmap

## Bulk Grid Focused Actions

- Resource Request for Proposals/Information
- Coal Transition Plan
- Proactive Siting
- Regional Transmission



# SRP is adding new resource projects at an unprecedented pace



**thank you!**